



# VAIL™

## LED Canopy Light



Beyond LED's VAIL LED Canopy Light Luminaire offers exceptional performance, efficiency and a unique design. Features such as high lumens per watt, outstanding efficacy and field serviceability, make it an ideal commercial canopy solution. The contractor-friendly VAIL LED canopy Light luminaire includes fasteners and a locking collar, making installation easy, secure and water-tight. It can be surface mounted easily from below the canopy deck and also has the ability to be pendant mounted.

### Product Features

- Up to 147 Lumens per watt
- Replaces up to 400W - 600W HID
- Operating Temperature: -40°F to 131°F(-40°C to 40°C)
- 50,000+ Hour LED Life Expectancy
- IP65 (NEMA 4X) Dust & Water Tight
- Corrosion Resistant Die Cast Aluminum Housing
- Polycarbonate Lens
- Stainless Steel Hardware
- Beam angle 110° Degree
- Includes J-Box
- Input Voltage 120-277Vac
- CRI: >80
- UL & DLC listed
- 5 Year warranty

# VAIL™ LED Canopy Light



SKU #	Model #	Watt	Lumens	CCT	Housing	Input Voltage	Dimming	Certifications
155453	AST-CP02B-180WDBM A3-a40	180W	26301Lm	5700K	White	120-277V	1-10V	UL & DLC

## SKU #. 155453 Specifications

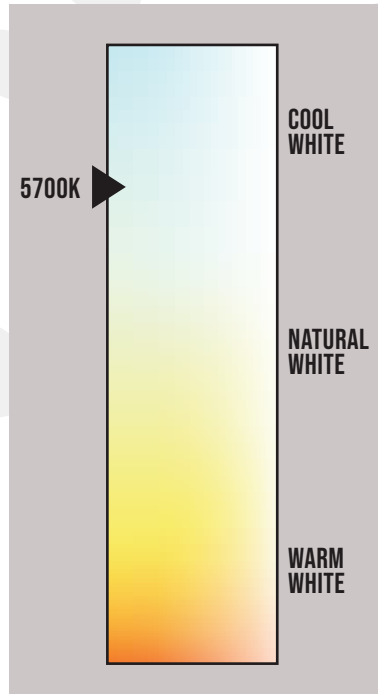
Parameter	Description	Value
General Performance	Model #	AST-CP02B-180WDBMA3-a40
	Wattage	180W
	Lumen	26301LM
	Lumen Efficacy	Up to 147LM/W
	Color Temperature	5700K
	CRI (Ra)	>80
	Beam Angle	110° Degree
	Diffuser Type	Frosted Lens
Electrical	Input Voltage	120-277Vac
	Frequency	50/60Hz
	THD (Tolerance : +5%)	≤20%
	Dimming	1-10V
	Power Factor	≥0.9
	Driver Brand	Daremay
	Driver Model	MP-200T130
	Driver Surge Protection	L/N-PE: 6kV, L-N: 6kV
Physical	Flicker Percent	<70%
	Operating Temperature	-30°C - +45°C
	Operating Humidity	20% - 90% RH
	Storage Temperature	-40°C TO 80°C
	Storage Humidity	-10% - 95% RH
	LED Brand	LUMILEDS
	LED Type	SMD2835 (0.5W)
LED QTY	1080 PCS	
Qualification	Housing	Die-cast Aluminum
	Housing Color	White
	IP Rating	IP65
	Warranty	5 Years Warranty



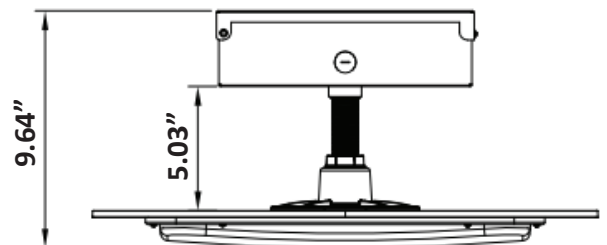
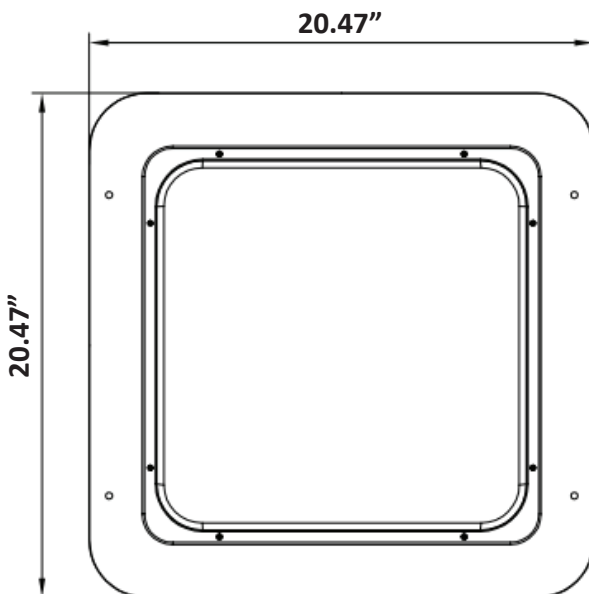
# VAIL™

## LED Canopy Light

### Correlated Color Temperature (CCT)



### Dimensions



# VAIL™ LED Canopy Light



## Photometric Data

### Luminaire Property

Luminaire Manufacturer:  
Luminaire Category:  
Lamp Catalog:  
Number of Lamps:  
Luminous Length (mm):  
Luminous Height (mm):  
Current: 1.508 A  
Power Factor: 0.996

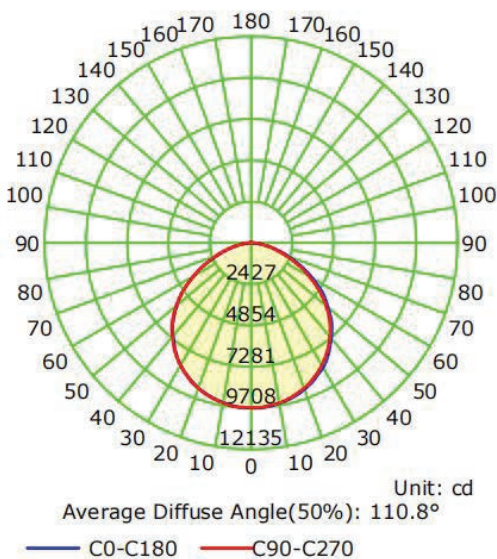
Luminaire Description:  
Lamp Description:  
Lumens per Lamp:  
Luminous Width (mm):  
Voltage: 120.0V  
Power: 182.23W

### Photometric Results

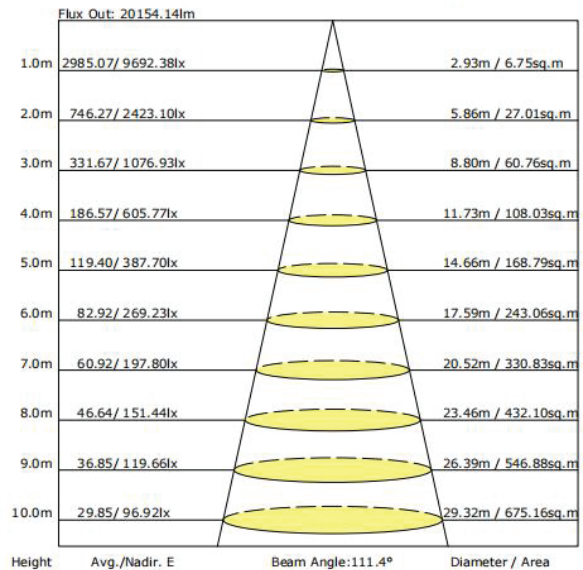
CIE Class: Direct  
Measurement Flux: 27062.6 lm  
Downward Ratio: 99%  
Horizontal Diffuse Angle(10%,50%): H157.3,H111.4  
Vertical Diffuse Angle(10%,50%): V157.4,V110.2  
Luminaire Efficacy Rating (LER): 148.56  
Max. Intensity: 9708.75 cd  
S/MH(C0/C180): 1.28

Total Rated Lamp Lumens: 27062.6 lm  
Efficiency: 100%  
Upward Ratio: 1%  
COro Intensity: 9692.38 cd  
Pos of Max. Intensity: H90 V1  
S/MH(C90/C270): 1.27

Luminous Intensity Distribution Curve



The Average Illuminance Effective Figure







# VAIL™ LED Canopy Light

## Installation Instruction

### LED Canopy Light

#### Cautions:

1. Can not use the electric generator to test the LED lamp.
2. Please abide by related country, regional and local law and regulations when install this fixture.
3. Please turn off the power before installation or maintenance.
4. Proper earth grounding is required to ensure safety.

#### Notice.

1. To avoid possibility of electrical shock or fire, the installation personnel must have professional electric knowledge.
2. Please wear gloves to avoid injury before installation.
3. If any smoke or spark of the wire happened, please turn off the power immediately and notify relevant personnel.

#### Attention:

1. Please check if there is any damage during shipping. If so, please contact manufacturer timely.
2. Please read the installation instruction carefully to check whether all the accessories are complete. After confirmation, then install the fixture according to installation steps.

## Installation Steps

1. Screw the aluminum pipe into the heatsink. (Figure 1)

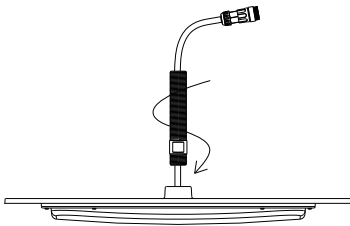


Figure 1

2. Screw the safety rope to heatsink by screwdriver. (Figure 2)

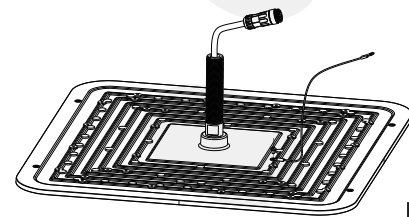


Figure 2

3. Drill the installation hole accordingly on the ceiling. (Figure 3)

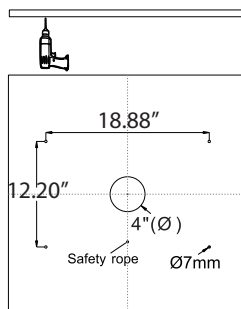


Figure 3

4. Lock the safety rope to the ceiling, assemble the installation plate to the aluminum pipe, then install led fixture. (Figure 4)

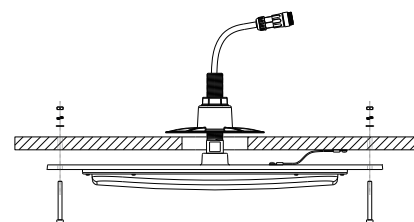


Figure 4

# VAIL™ LED Canopy Light



## Installation Instruction

5. Take the driver box apart by screwdriver. (Figure 5)

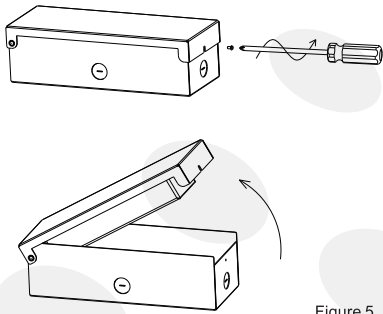


Figure 5

7. Connect the DC connector of led fixture with driver's DC connector. Remove the holes of the driver box if necessary. (Figure 7)

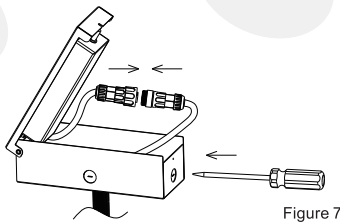


Figure 7

6. Assemble the 3/4 pipe nut to the aluminum pipe (fix the height and direction of driver box), across the DC connector through driver box, then screw the driver box onto the aluminum pipe. (Figure 6)

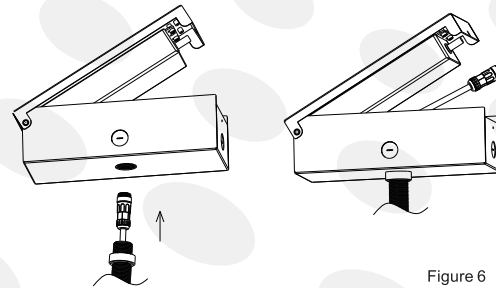


Figure 6

8. Connect the LED fixture to local power with necessary connector protection measures. (Figure 8)

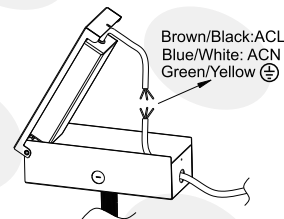


Figure 8

9. Finally, assemble the driver box. (Figure 9)(Figure 10)

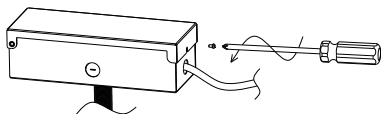


Figure 9

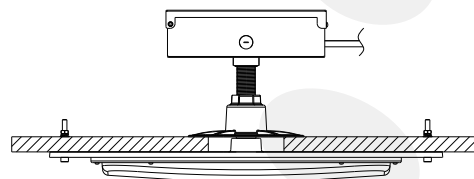


Figure 10

### Warning /Avertissement

MIN 75°C SUPPLY CONDUCTOR

THIS PRODUCT MUST BE INSTALLED IN ACCORDANCE WITH THE APPLICABLE INSTALLATION CODE BY A PERSON FAMILIAR WITH THE CONSTRUCTION AND OPERATION OF THE PRODUCT AND THE HAZARDS INVOLVED.

LES FILS D'ALIMENTATION 75°C MIN

CE PRODUIT DOIT ETRE INSTALLE SELON LE CODE D'INSTALLATION PERTINENT, PAR UNE PERSONNE QUI CONNAIT BIEN LE PRODUIT ET SON FONCTIONNEMENT AINSI QUE LES RISQUES INHERENTS.



# VAIL™

## LED Canopy Light

### Notice For User

- Please turn off power before install or change assembly parts.
- The input voltage and lamps should be matched, after connecting the power line, Please make sure the wiring section is insulated.
- No-professionals, must not install and disassemble the lamp

### Trouble Shootings

Troubles	Check Points
Flickering of the light	Turn off the power and turn on again in 3 minutes. If same phenomena occur, then call agencies.
Out of Working	Please check the connection

### Packaging

	Size	Qty / Carton	Net Weight	Gross Weight
Outer Box	22.04 x 22.04 x 6.30	1 Pc	17.32 LBS	20.28 LBS

### Warranty

5 Years Warranty

# VAIL™

## LED Canopy Light



### Application



LED CANOPY LIGHT